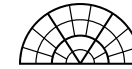




**THE NED**  
LONDON



## CONTENTS

4-5

### **Meetings & Events at The Ned**

*Historic spaces in  
the heart of the City*

6-19

### **The Spaces**

*Six rooms and terraces on The Ned's 6<sup>th</sup> floor  
and the Princes Dome*

20-21

### **Bedrooms & Suites**

*252 bedrooms,  
each individually designed*

22-25

### **Eating & Drinking**

*Typical menus available*



# Meetings & Events at The Ned

A variety of spaces available for meetings, parties and weddings in the heart of the City of London

**BETWEEN STEEL AND GLASS TOWERS** and 17th-century spires, The Ned offers access to six Grade I-listed rooms, two terraces and Princes Dome. The historic building, designed by Sir Edwin 'Ned' Lutyens almost a century ago, has been carefully restored by the design teams from Soho House & Co and Sydell Group. The rooms retain many original period features, including walnut panelling and vintage chandeliers, as well as ample arched windows to allow for plenty of natural light.

The private hire spaces range in size from 21 sq m to 165 sq m and have a capacity of between four and 200 people. Food and drink menus – ranging from cocktails and canapés to four-course dinners – can be created by our team. **N**

City skyline with The Ned in the foreground.

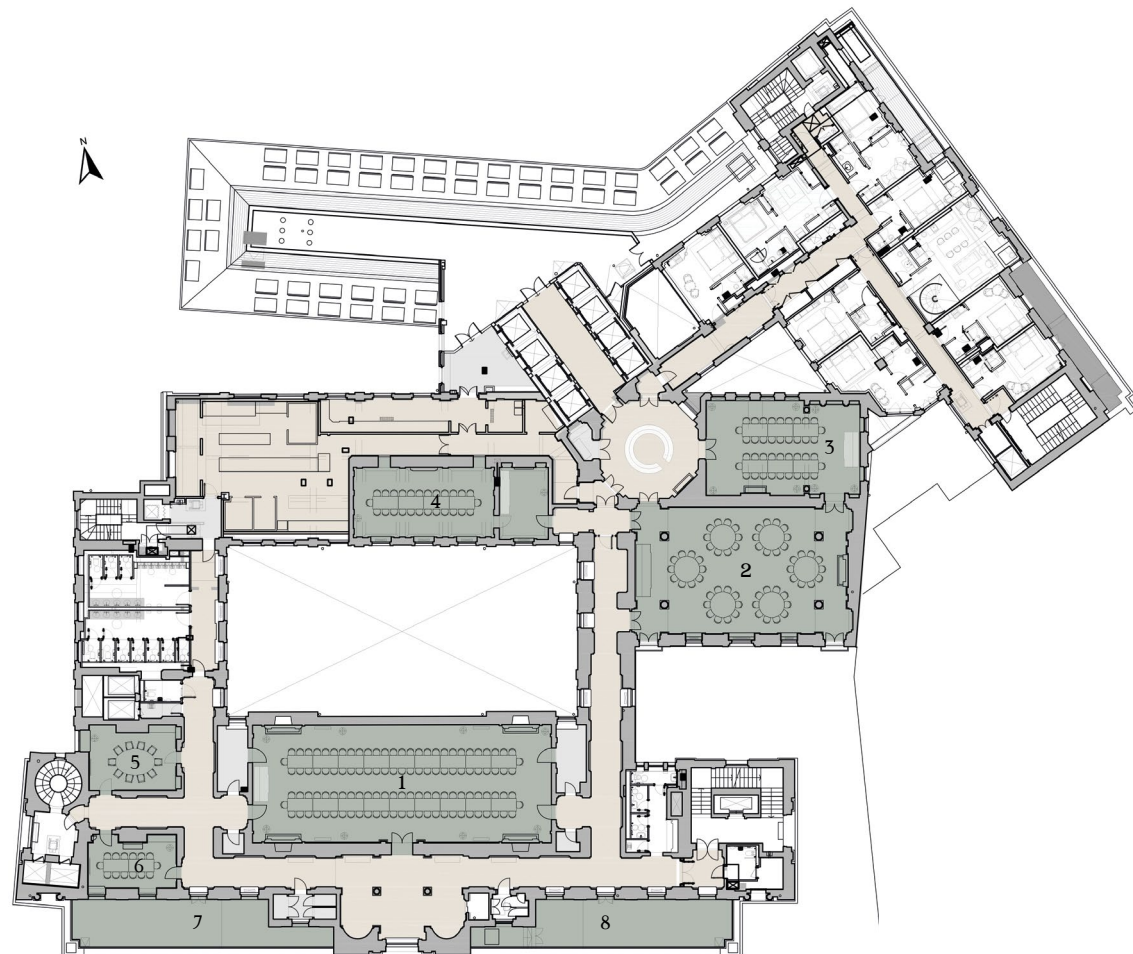




# The Spaces

The Ned's six Grade I-listed meeting rooms and two outdoor terraces are available to hire on the historic and fully-restored sixth floor - all benefit from natural light and have a dedicated reception area and events kitchen. Princes Dome sits on the rooftop of The Ned, beside the members' area Ned's Club Upstairs.

- 1 **THE TAPESTRY ROOM** (capacity of up to 200)
- 2 **THE SALOON** (capacity of up to 120)
- 3 **THE DRAWING ROOM** (capacity of up to 60)
- 4 **THE RWB ROOM** (capacity of up to 60)
- 5 **THE WREN ROOM** (capacity of up to 10)
- 6 **THE ROSE ROOM** (capacity of up to 14)
- 7 **SOUTH-WEST TERRACE** (capacity of up to 70)
- 8 **SOUTH-EAST TERRACE** (capacity of up to 70)
- 9 **PRINCES DOME** (capacity of up to 50)



## THE TAPESTRY ROOM

165 sq m | L: 20.9 m | W: 7.9 m | H: 8.7 m  
 1775 sq ft | L: 68.6 ft | W: 25.9 ft | H: 28.6 ft

Featuring original walnut panelling and crystal chandeliers, The Tapestry Room is our most iconic space. It takes its name from the remarkable pastoral tapestry that wraps around the upper walls - the largest of its kind ever produced in England when it was created in the 1920s.

### Meeting Room Setups

Setup	Hollow Sq	U Shape	Cabaret	Classroom	Theatre
Capacity	68	58	77	80	200

### Banquet Setups

Setup	Round Table	Long Table	Reception
Capacity	120	140	200









## THE SALOON

125 sq m | L: 14.7 m | W: 8.5 m | H: 9 m  
 1345 sq ft | L: 48.2 ft | W: 27.9 ft | H: 29.5 ft

Dominated by an 18th-century chandelier from London's Devonshire House, The Saloon glories in ornate chalk frieze and a restored parquet floor.

### Meeting Room Setups

Setup	Hollow Sq	U Shape	Cabaret	Classroom	Theatre
Capacity	50	40	63	58	120

### Banquet Setups

Setup	Round Table	Long Table	Reception
Capacity	70	68	120







## THE DRAWING ROOM

70 sq m | L: 10.6 m | W: 6.6 m | H: 3.2 m  
 755 sq ft | L: 34.8 ft | W: 21.7 ft | H: 10.5 ft

Connected to The Saloon, The Drawing Room has a club-like feel, with its restored panelled walls lined with period etchings, paintings and lithographs.

### Meeting Room Setups

Setup	Boardroom	Hollow Sq	U Shape	Cabaret	Classroom	Theatre
Capacity	20	38	24	28	28	76

### Banquet Setups

Setup	Round Table	Long Table	Reception
Capacity	50	40	80







## THE RWB ROOM

45 sq m | L: 9.7 m | W: 4.6 m | H: 3.3 m  
 480 sq ft | L: 31.8 ft | W: 15.1 ft | H: 10.8 ft

Originally the private luncheon room of the Midland Bank's chairman, Reginald McKenna, The RWB Room is distinguished by its unique light oak panelling, giving it an intimate, informal atmosphere.

### Meeting Room Setups

Setup	Boardroom	Hollow Sq	U Shape	Cabaret	Classroom	Theatre
Capacity	20	16	18	21	28	60

### Banquet Setups

Setup	Round Table	Long Table	Reception
Capacity	30	24	50







## THE WREN ROOM

26 sq m | L: 5.9 m | W: 4.4 m | H: 2.9 m  
 279 sq ft | L: 19 ft | W: 14.4 ft | H: 9.5 ft

*Capacity of 10*

Named after Sir Christopher Wren, who designed St Mildred's Church, a previous occupant of the 27 Poultry site, this room has original chandeliers, wood panelling and a carpet inspired by large-leaf Verdure tapestries.



## THE ROSE ROOM

21 sq m | L: 5.9 m | W: 3.6 m | H: 2.7 m  
 229 sq ft | L: 19.4 ft | W: 11.8 ft | H: 8.9 ft

*Capacity of 14*

Named after the Rose Tavern, which stood on The Ned's site before being consumed by the Great Fire of London, The Rose Room features original chandeliers, a marble fireplace and wood panelling.





## THE TERRACES

*60 sq m / 645 sq ft*

*Capacity for 26 dining or 70 standing, on each terrace*

Looking out over the City of London and St Paul's Cathedral, our two large terraces have a secluded feel, offering privacy with a dramatic view. Both are ideal for pre-dinner drinks in conjunction with our larger event spaces, or for a stand-alone party. For those seeking to eat al fresco, the terraces can accommodate up to 26 people each, for lunches and dinners catered for by our bespoke events kitchen.







## PRINCES DOME

56 sq m / 600 sq f

Princes Dome is one of two converted domes on the roof, with an outdoor terrace for eating and drinking. The dome has a fully stocked bar and walls are clad with duck egg blue wood.

### Banquet Setups

Setup	Dinner	Reception
Capacity	26	50



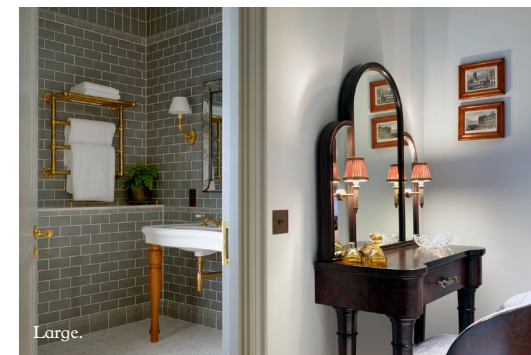


# Bedrooms & Suites

The Ned's 252 bedrooms, nine of which are situated next to the event spaces, can be booked as part of an event. Rooms range in size from intimate to large-scale suites – all with a nod to 1920s glamour. Every bedroom at The Ned has been designed to give guests a relaxed yet memorable stay.



Bedroom size	Room count	Bed size	Room size
<b>ACCESSIBLE</b>	12	Queen / King	23-34 sq m / 75-111 sq ft
<b>COSY</b>	80	Queen	20-30 sq m / 215-323 sq ft
<b>MEDIUM</b>	101	King	25-35 sq m / 269-377 sq ft
<b>LARGE</b>	12	King / Super King	35-45 sq m / 377-484 sq ft
<b>HERITAGE</b>	10	King / Super King	30-45 sq m / 323-484 sq ft
<b>GRAND HERITAGE</b>	5	King / Super King	40-65 sq m / 430-699 sq ft
<b>STAIRWELL STUDIO</b>	4	King / Super King	50-57 sq m / 538-613 sq ft
<b>STUDIO SUITE</b>	7	King / Super King	40-43 sq m / 430-465 sq ft
<b>HERITAGE SUITE</b>	1	Super King	50 sq m / 538 sq ft
<b>TERRACE SUITE</b>	1	Super King	51 sq m / 549 sq ft
<b>DUPLEX SUITE</b>	1	Super King	85 sq m / 915 sq ft
<b>2 BED FAMILY SUITE</b>	1	Super King	95 sq m / 1023 sq ft
<b>LUTYENS SUITE</b>	1	Super King	100 sq m / 1076 sq ft





# Eating & Drinking

## CANAPES

*Sample Menu*

### COLD

---

Scottish smoked salmon, crisp rye & watercress

Citrus cured seabass, blini & caviar

Home cured venison bresaola, celeriac remoulade

Beef carpaccio, parmesan & truffle

Crisp potato thin, truffled cream cheese

Vietnamese summer rolls, mint, coriander & sweet chilli

### HOT

---

Wild mushroom arancini, trompette & Madeira puree

Potato, cauliflower, cumin & coriander samosa, date chutney

Asian spiced pigs cheek, crisp rice cracker

Confit lamb fritters, redcurrant & mint

Lebanese chicken, tahini spiced yoghurt

Miniature beef Yorkshire pudding, horseradish & watercress

Haggis bon bon, swede, honey & whiskey puree

BBQ pork belly steamed buns

Scallop & prawn toast, spring onion & ginger

### DESSERT

---

Citrus financier

Chestnut & hazelnut tartelette

Passion fruit slice

Chocolate & pear mini cups

Seasonal macarons

## CHAIRMAN'S PRIVATE DINING

*Sample Menu*

### STARTERS

---

Butternut & ginger soup, crab cannelloni

Orkney scallops, roasted & raw cauliflower, caper beurre noisette

Beef carpaccio, chestnuts, Treviso & cabernet sauvignon dressing

Game terrine, pickled vegetable salad, truffle mayo

Heritage beetroot, goats curd & savoury granola

Roasted pumpkin, ricotta, bitter leaves & truffle

### MAINS

---

Fillet of venison, spiced kale, swede & honey

Fillet of beef, braised cheek, wild mushroom & madeira

Roasted chicken, confit leg, leek & wild mushroom cream

Herb crumbed cannon of lamb, red pepper, chorizo & black olive

Pave of halibut, mussels, clams & sea herbs

Potato Gnocchi, trompette, celeriac & aged pecorino

*Boulangère potatoes • Thyme & duck fat roasted chateau potatoes*

*Lemon & parsley crushed charlotte potatoes • Creamed potato*

### DESSERT

---

Sticky toffee pudding, vanilla ice cream & butterscotch sauce

Chocolate marquis, blackcurrants

Pear crumble with oats & almonds, Jersey cream

Mandarin parfait, shortbread, chocolate ganache

Selection of British cheese, chutney, crackers



# Eating & Drinking

## DAY DELEGATE

*Sample Menu | Other options available*

### BREAKFAST

---

Lemon & poppy seed muffin

Smashed avocado on sourdough

### MID MORNING

---

Mocha muffin

French toast with orange & mascarpone

### LUNCH

---

Mini pie stall:

*Root vegetable & goats cheese; Chicken & wild mushroom; Game & prune*

Soup of the day, bread & butter

Secrett farm mixed leaf

New potato, quail egg & pickled cucumber salad

Black Forest chocolate brownie

Berry Eton mess

### AFTERNOON TEA

---

Lobster & lemon mayo bridge roll

Ham hock sausage roll

Tomato, goats cheese & thyme tart

Carrot cake & cream cheese

## WINE

*Sample Wine List*

### SPARKLING

---

Prosecco Treviso DOC, Luna Argenta, Brut NV

Nyetimber, Brut Vintage

Perrier Jouet, Grand Brut NV

Louis Roederer, Brut Premier NV

Perrier Jouet Blason Rose, Brut NV

Billecart Salmon Reserve, Brut NV

Ruinart Blanc de Blancs, Brut NV

Laurent Perrier Rose, Brut NV

### WHITE

---

Chardonnay Sauvignon, La Croix Belle, Cotes de Thongue, France

Picpoul de Pinet, Domaine Beauvignac, Languedoc, France

Viognier 'Iles Blanches', Cellier des Chartreux, Rhone, France

Sauvignon Blanc, Double Cove, Marlborough, New Zealand

Chardonnay, Cycle Gladiator, California USA

Viognier Roussanne, Babylon's Peak, Swartland, Sth Africa

Gavi di Gavi 'La Meirana', Broglia, Piemonte, Italy

Pinot Gris, Tinpot Hut, Marlborough, New Zealand

Chardonnay, Innocent Bystander, Yarra Valley, Australia

Chablis, Domaine Defaix, Burgundy, France

Pouilly Fume, Domaine Jolivet, Loire, France

### RED

---

La Croix Belle, Syrah/Merlot, Cotes de Thongue, France

Rioja 'Capitosa', Tempranillo, Bodega Altanza, Spain

Montepulciano d'Abruzzo Barrique, Itynera, Abruzzo, Italy

Pinot Noir, Cycle Gladiator, California USA

Chateau de Ricaud, Cadillac Cotes de Bordeaux, France

Malbec 'Single Vineyard', Decero, Mendoza, Argentina

Montagne St Emilion, Vieux Chateau Negrit, France

SMG, Babylon's Peak, Swartland, Sth Africa

Rioja Reserva, Marques de Murrieta, Spain

Bourgogne Pinot Noir, Domaine JM Pillot, France

Vino Nobile di Montepulciano, La Braccasca, Tuscany, Italy

Chateau Perron, Lalande de Pomerol, France

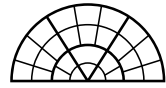
### ROSE

---

Lady A, Provence IGP, France

Domaines Ott, 'Clos Mireille' vineyard, Cotes de Provence, France





**THE NED**  
LONDON

EVENTS@THENED.COM

27 POULTRY  
LONDON EC2R 8AJ

+ 44 (0)20 3828 2000  
THENED.COM





